

VM DC Vibrators



VM 60 Electric Vibrators were designed for the following conditions:

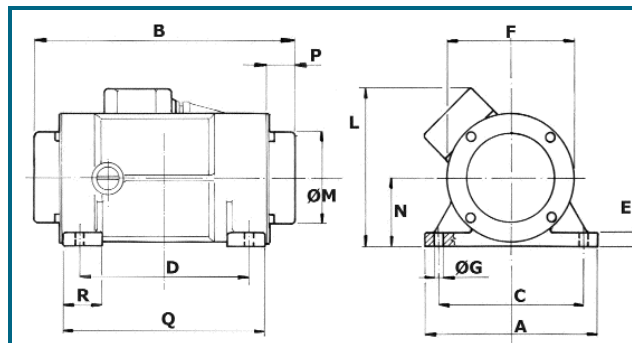
- Continuous duty applications
- Power source 12-24 DC Volts

It is widely used in Concrete Pump Applications, even if the vibrator were to be totally submerged in wet concrete. When mounted rigidly on hopper grid, the VM 60 helps promote flow of no-slump concrete through the grid into the inlet hopper.

Landscape equipment, fertilizer trailers, spreaders and hoppers.

PERFORMANCE DATA

MODEL	FORCE OUTPUT lbs	VOLTAGE Volts	POWER OUTPUT hp	AMP DRAW Amps	SPEED Vpm	WEIGHT lbs
VM 60-12	375	12	0.10	6	5000	11
VM 60-24	375	24	0.10	3	5000	11
VM 70-12	870	12	0.70	39	5500	25



DIMENSIONS

MODEL	DIMENSIONS											
	A	B	C	D	E	F	G	L	M	N	P	Q
VM 60	6.10"	9.17"	5.31"	6.30"	0.51"	5.51"	0.35"	4.72"	4.64"	2.4"	0.96"	7.28"
VM 70	7.20"	12.36"	6.10"	5.90"	0.63"	6.49"	0.51"	6.42"	5.43"	2.83"	2.13"	7.32"